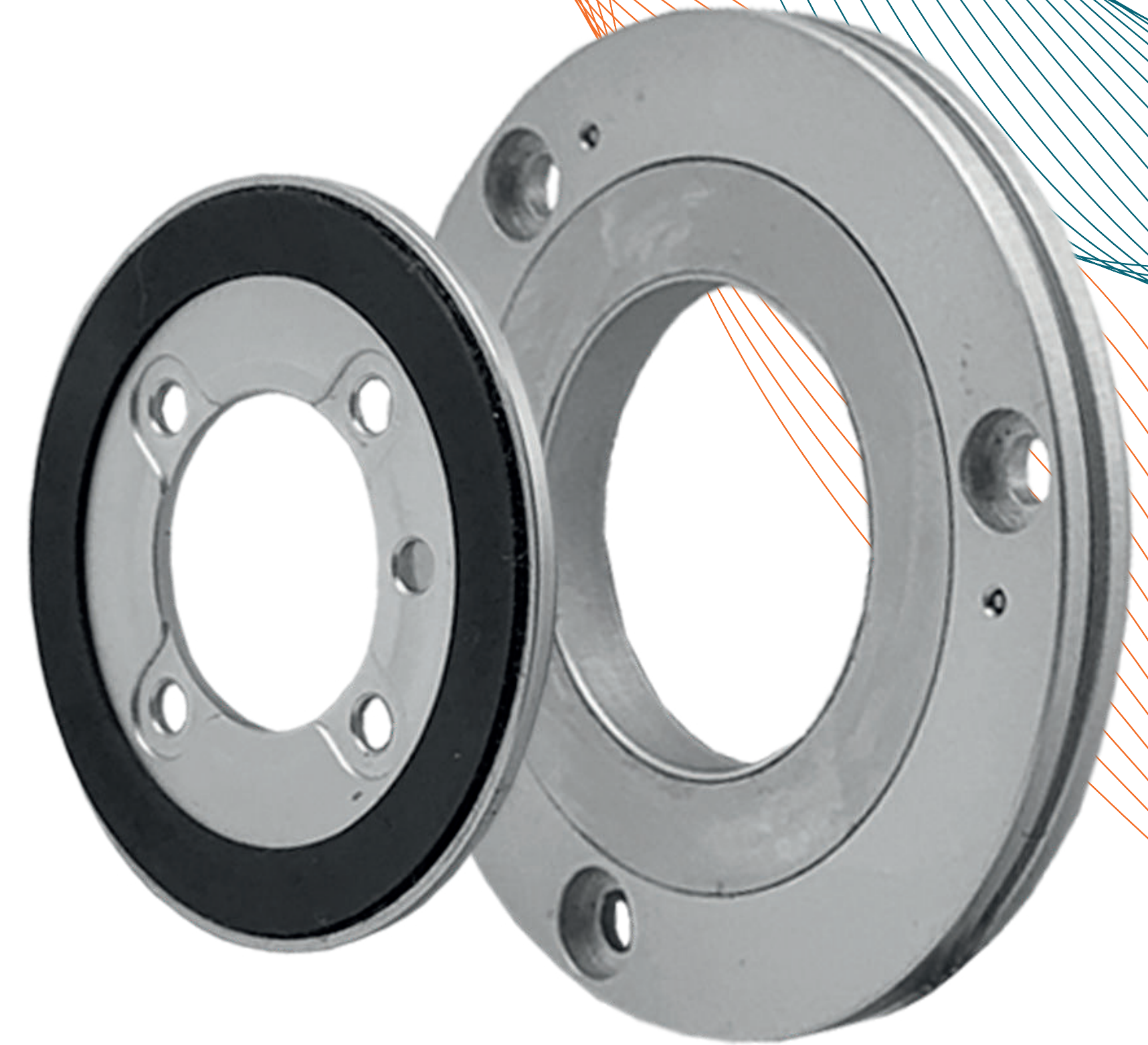


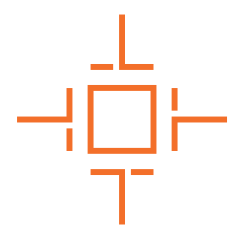
GMI ROTARY ENCODER

Arcseconds all environments

Make your application stand out with a precise, versatile, all-in-one solution.



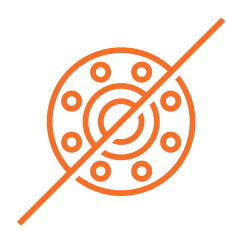
Absolute hollow shaft



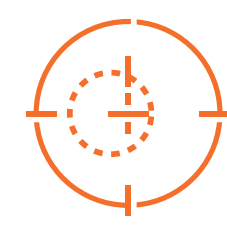
Compact



Extended temperature range



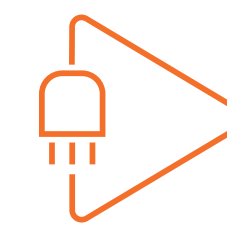
Frameless, without bearings



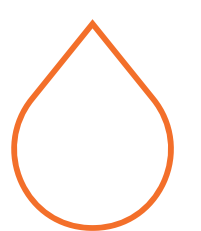
Wide mounting tolerance



Accuracy in Arcseconds



Plug-n-play: no field calibration

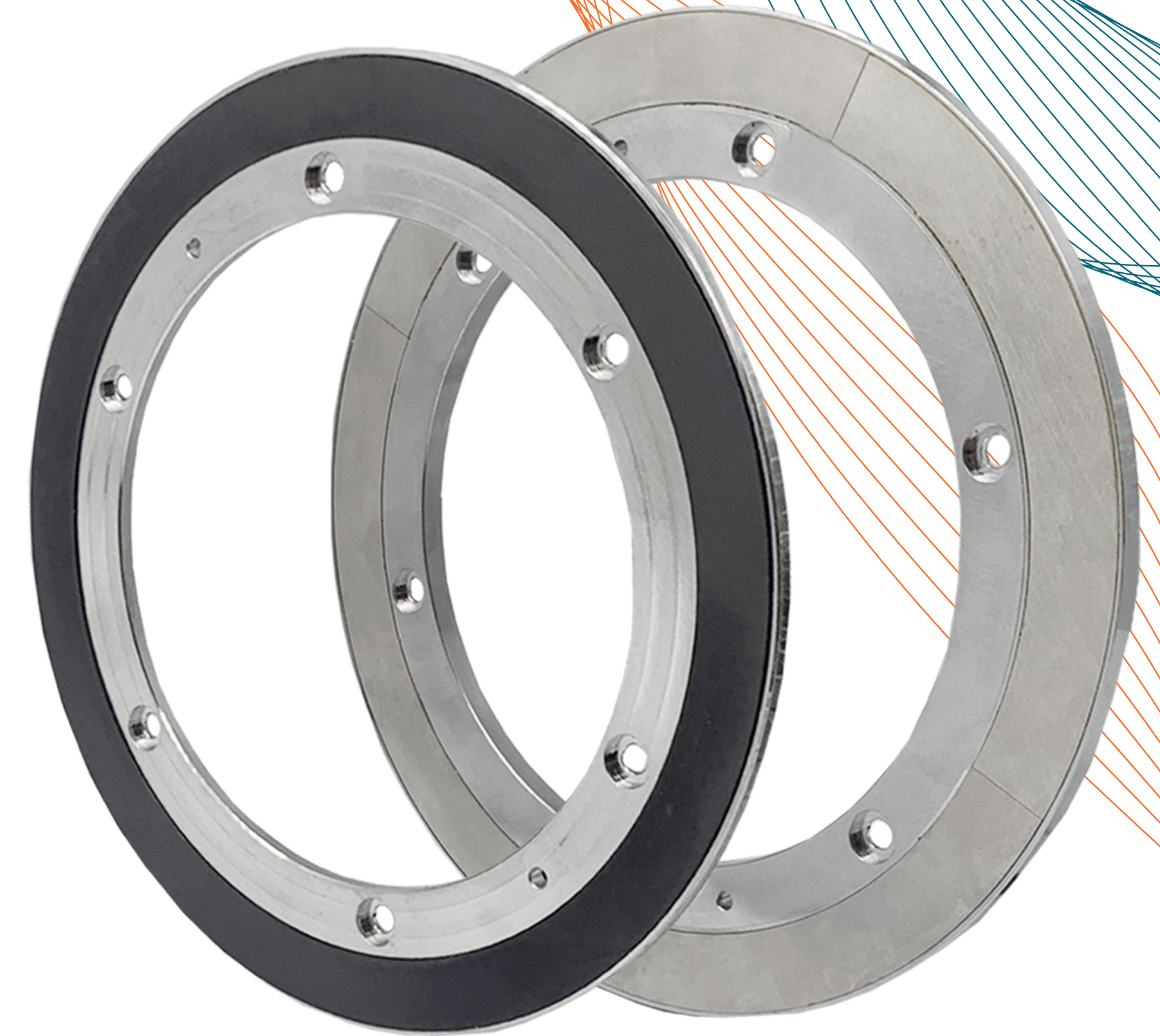


IP67

GMI ANGLE ENCODER

Arcseconds all environments

Hysteresis-free performance and accuracy in arcseconds for even the most demanding applications.



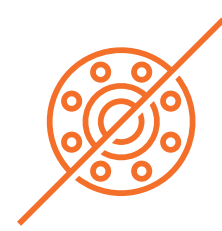
Absolute hollow shaft



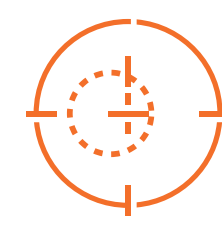
High accuracy and resolution



Extended temperature range



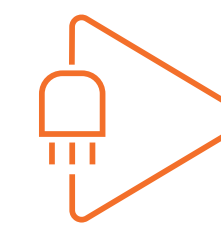
Frameless, without bearings



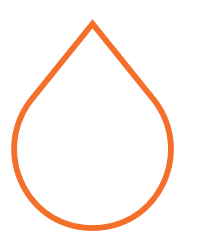
Wide mounting tolerance



Accuracy in Arcseconds



Plug-n-play: no field calibration

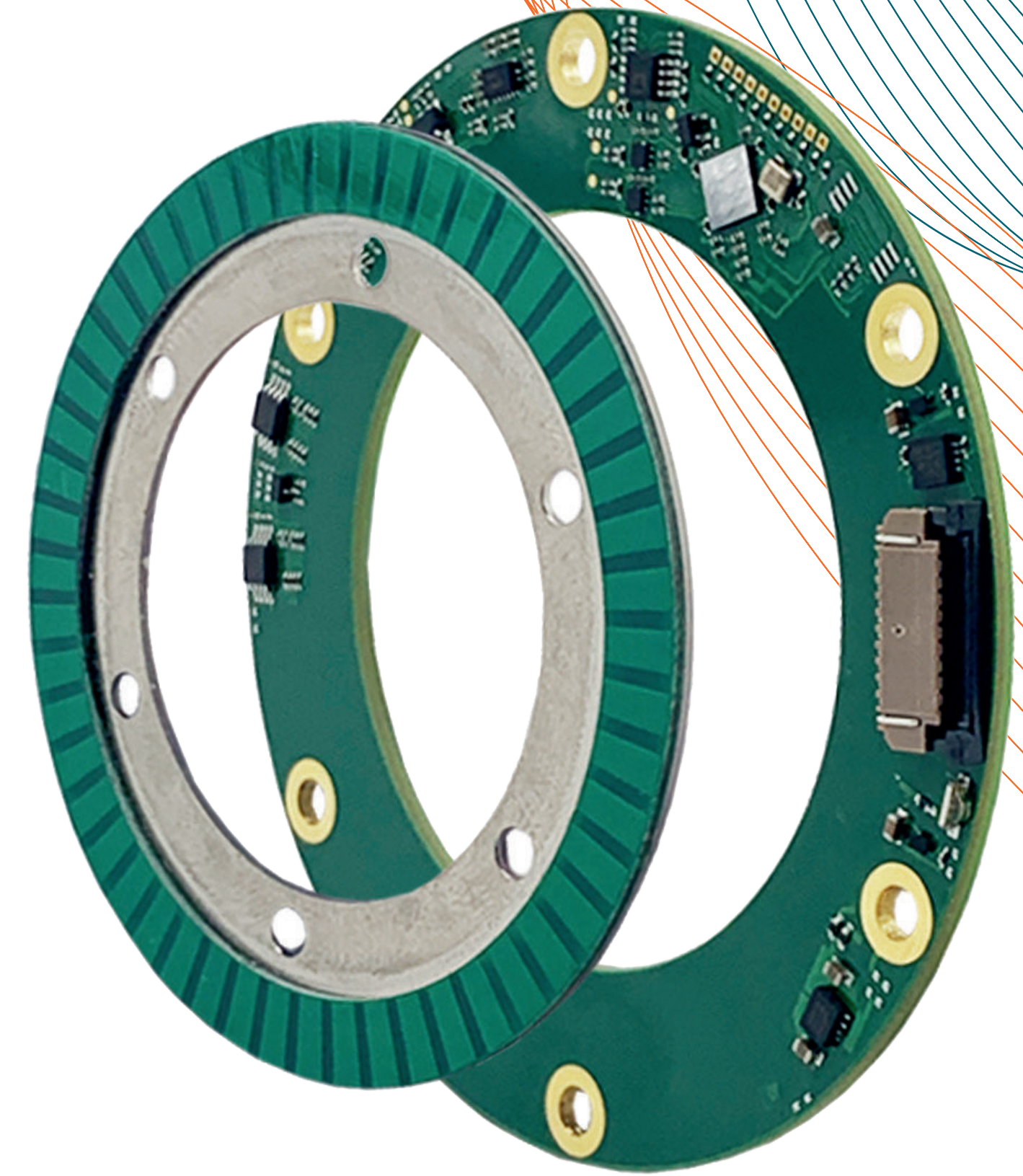


IP67

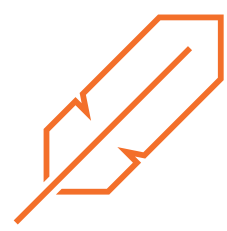
INDUCTIVE ROTARY ENCODER

Arcseconds all environments

An absolute encoder of highest quality in the smallest possible size.



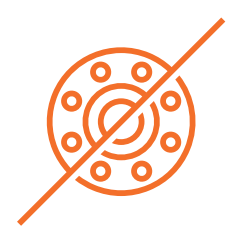
Absolute hollow shaft



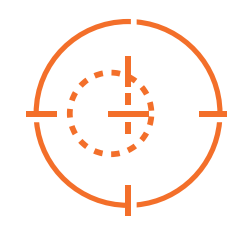
Lightweight (14 g in total)



Resistant to dust and electric + magnetic fields



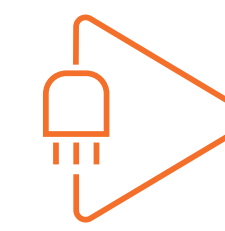
Frameless, without bearings



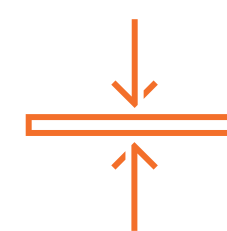
Wide mounting tolerance



Accuracy in Arcseconds



Plug-n-play: no field calibration



Ultra-flat and narrow (thickness < 6mm)